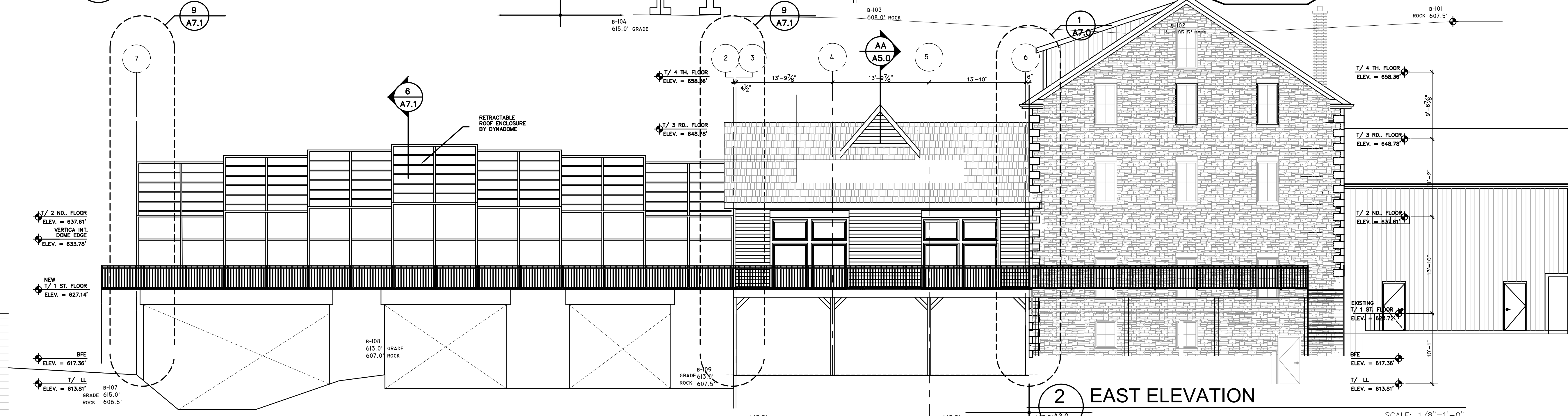
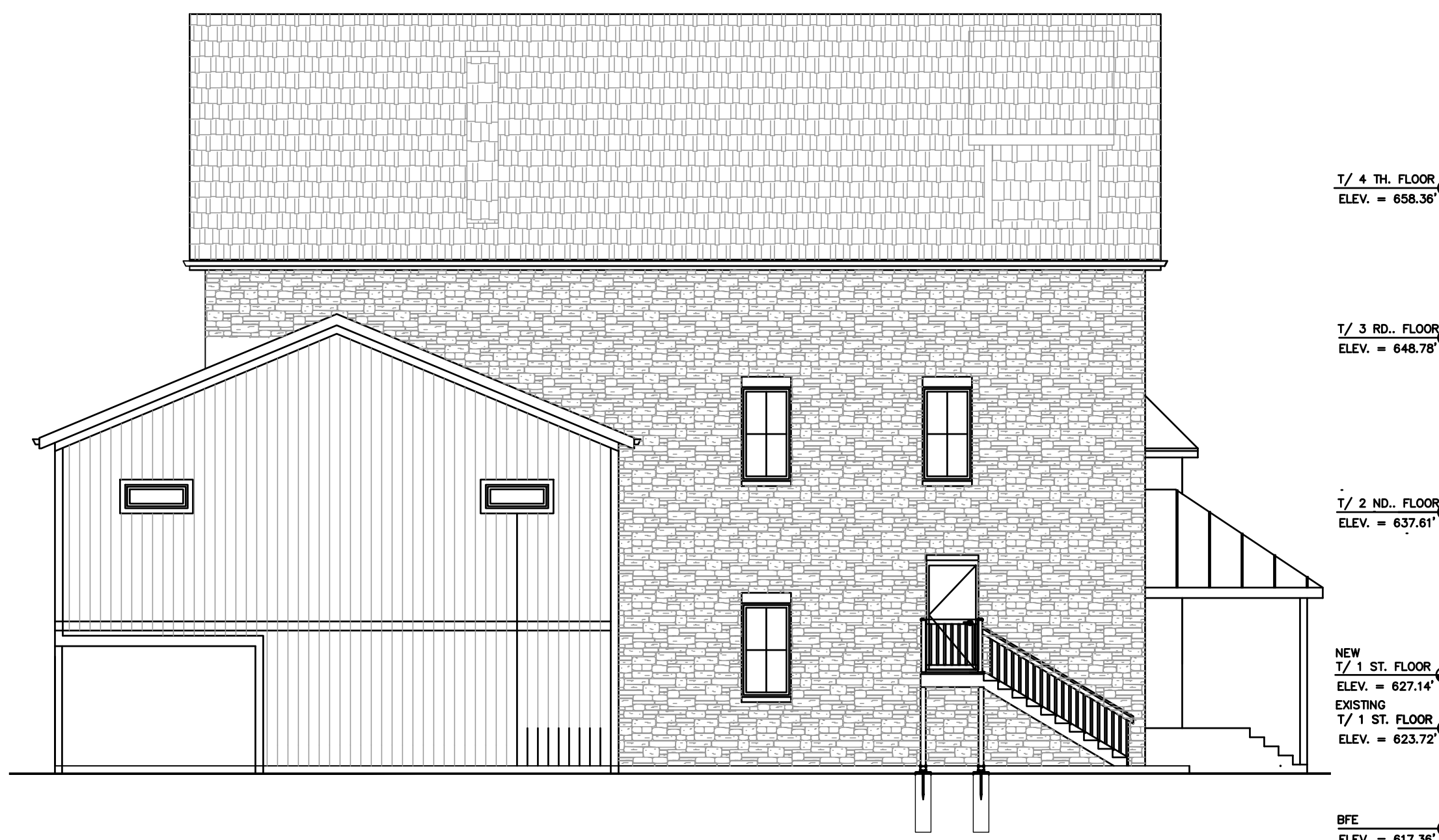


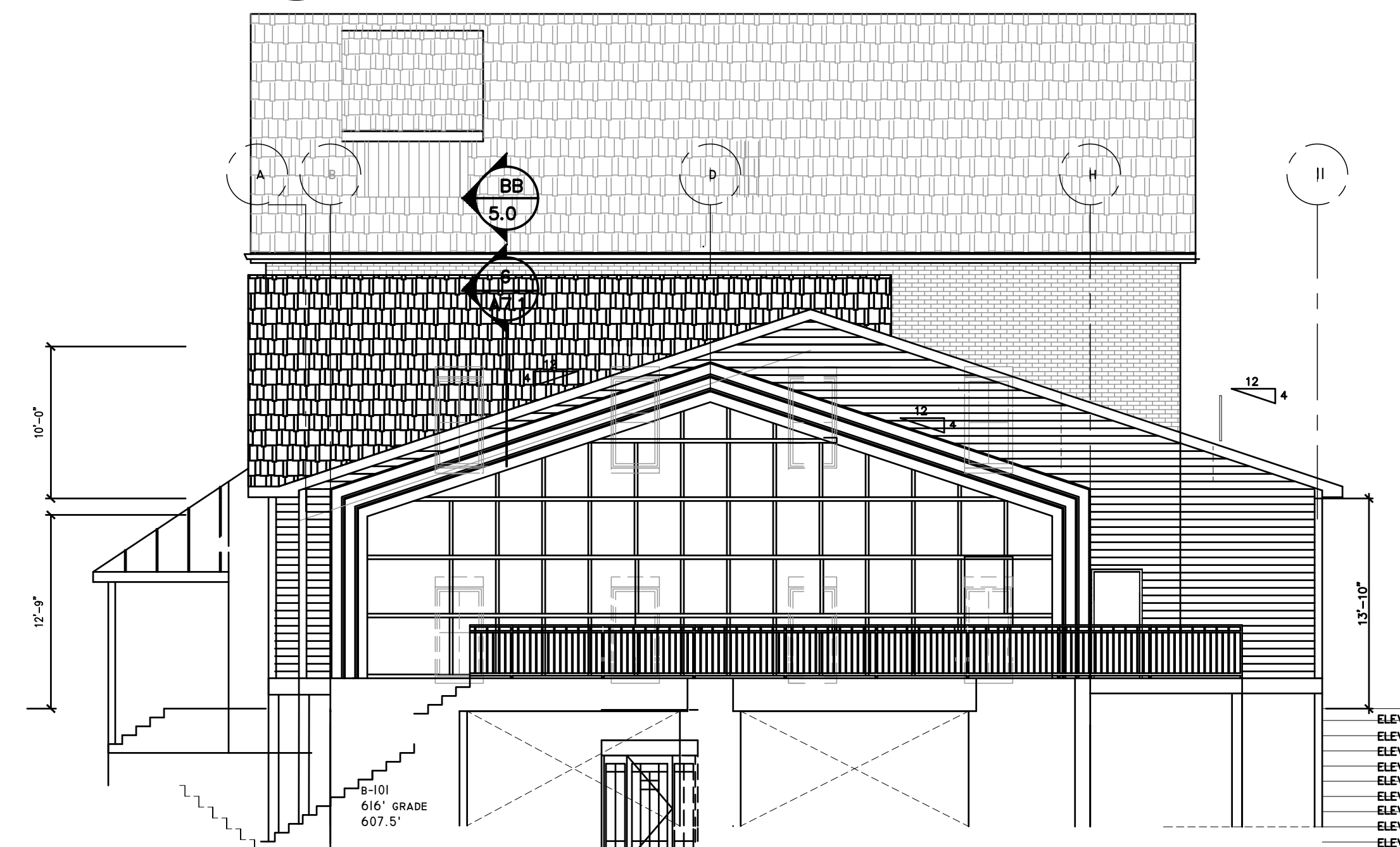
1 WEST ELEVATION
A3.0



2 EAST ELEVATION
A3.0



3 SOUTH ELEVATION
A3.0



4 SOUTH ELEVATION
A3.0

- ELEV. = 623'
- ELEV. = 622'
- ELEV. = 621'
- ELEV. = 620'
- ELEV. = 619'
- ELEV. = 618'
- ELEV. = 617'
- ELEV. = 616'
- ELEV. = 615'
- ELEV. = 614'
- ELEV. = 613'
- ELEV. = 612'
- ELEV. = 611'
- ELEV. = 610'
- ELEV. = 607.6'

NEW FACILITY FOR:
GRAY'S MILL
211 N. RIVER ST.
MONTGOMERY, ILLINOIS

STEVEN W. HANSEN
ARCHITECT
880 LONGVIEW CT.
SUGAR GROVE, IL
630.466.8021 - 60594

DATE	DESCRIPTION
1 11-08-22	PROGRESS SET
2 12-14-22	REVIEW SET
3 12-28-22	RAISE 1 ST. FLOOR 2', ADD NORTHEAST BECK.

PROJECT NO.
2022 - 211

A3.0